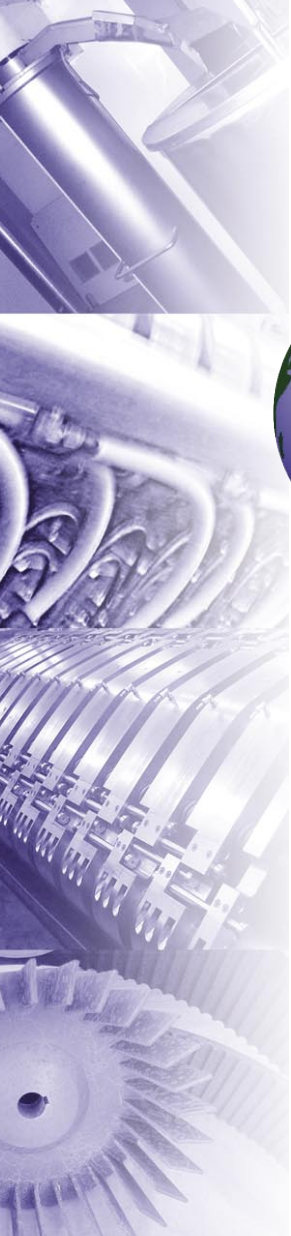




# Teckru

## projects

### Company information



**Teckru B.V. / Teckru Projects B.V.**  
address:  
De Zwaan 2  
1601 MS Enkhuizen  
The Netherlands

tel: (+31)228-567855  
fax: (+31)228-567813  
mob: (+31)618-819318  
email: [g.kruiver@teckru.nl](mailto:g.kruiver@teckru.nl)  
internet: [www.teckru.nl](http://www.teckru.nl)

# Introduction

**Teckru Projects** is active in the area of machines and installations for cocoa processing.

We offer excellent quality in our own range of systems. This range now covers all items for the **pressing of cocoa liquor, powder milling, powder stabilising + packing** and the **filtering and tempering of butter**. In addition we offer several new systems for the **intake and cleaning of cocoa beans**. To seamlessly integrate this equipment into a factory flow we offer conveyors and the necessary utilities, as well as detectors and sensors for quality assurance and automation.

Besides the above, we offer full service in engineering and project realisation. This can be for new turn-key installations or for modernisation and capacity increase of existing plants.

To summarize the general benefits our company has to offer:



- Excellent quality and durability: All materials used in manufacturing our machines are of high quality and durability, like high grade and heat treated steel alloys. This contributes to a long lifetime of our systems.

- High but realistic capacities, which hold over the years. Teckru will always be realistic when putting forward system capacities. Regardless, we can be confident that our systems are competitive and keep producing as stated.

- Low downtime and maintenance costs: Because of our long and intensive practical experience, we have improved even the tiniest details of our systems. This goes particularly for our cocoa butter presses, which are built to run 24 hours a day, 365 days a year, with minimum maintenance.

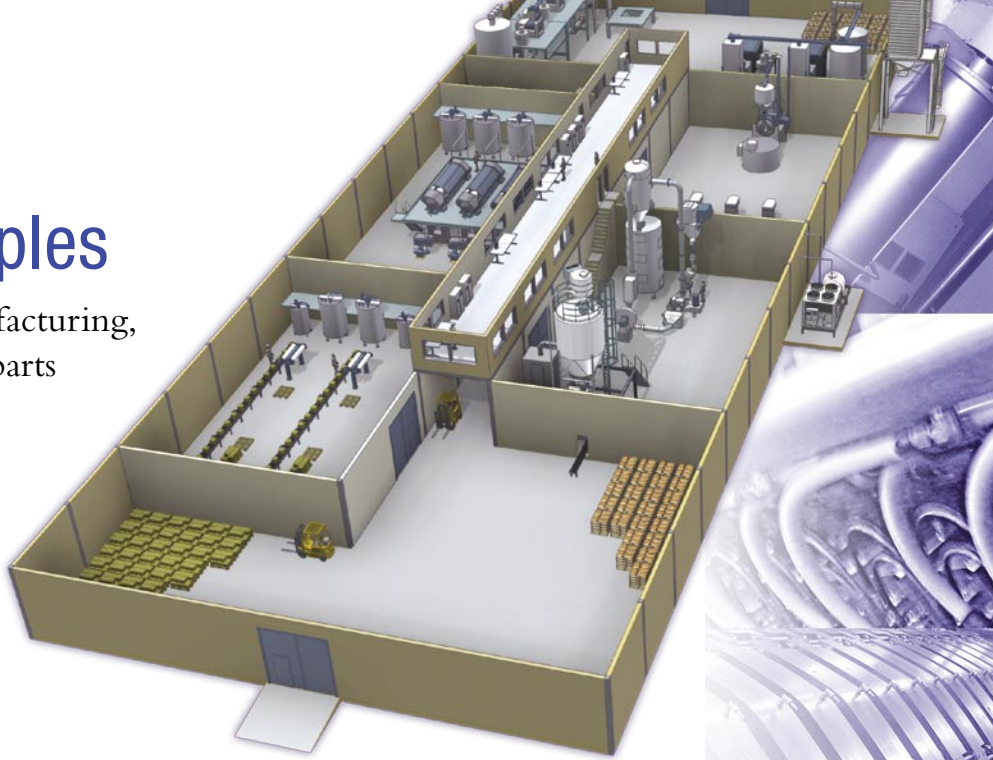
Next to Teckru Projects, the **Teckru** company supplies spare parts for many types of cocoa processing machines. These machines include cocoa butter presses, hydraulic units, powder plants, bean breakers and liquor grinders etc. Spares are available for all brands, often from stock.



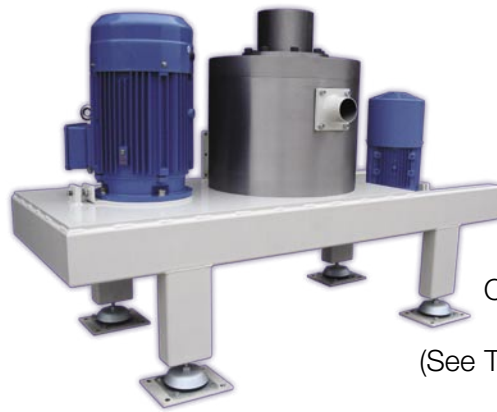
A multitude of spare parts in stock

# Product examples

Machine design and manufacturing,  
upgrade and replacement parts  
or complete installations.



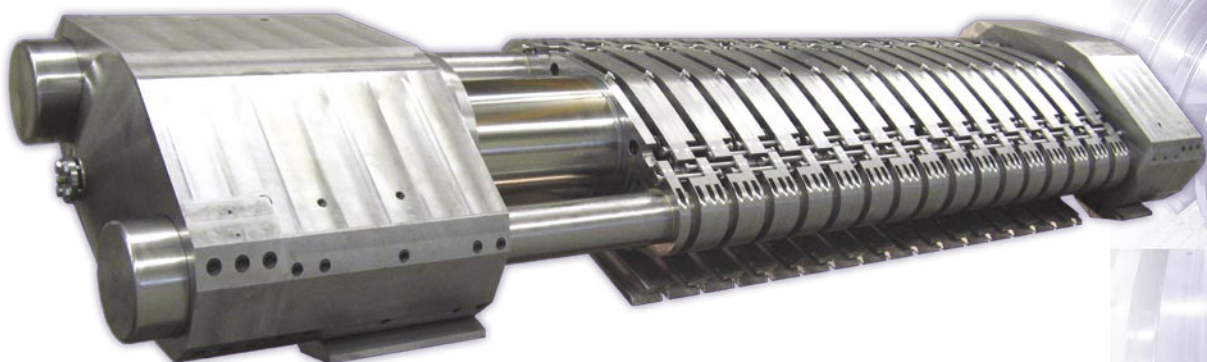
Hydraulic unit  
for butter presses



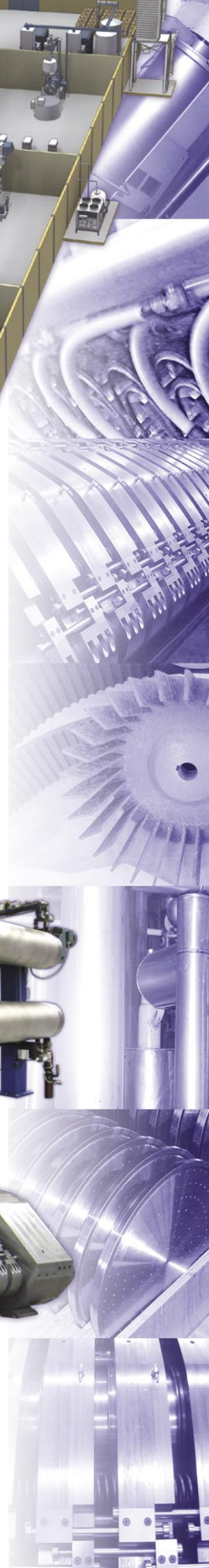
Cocoa Powder  
Classifier Mill  
(See TCM brochure)



Scraper coolers for  
cocoa butter or liquor

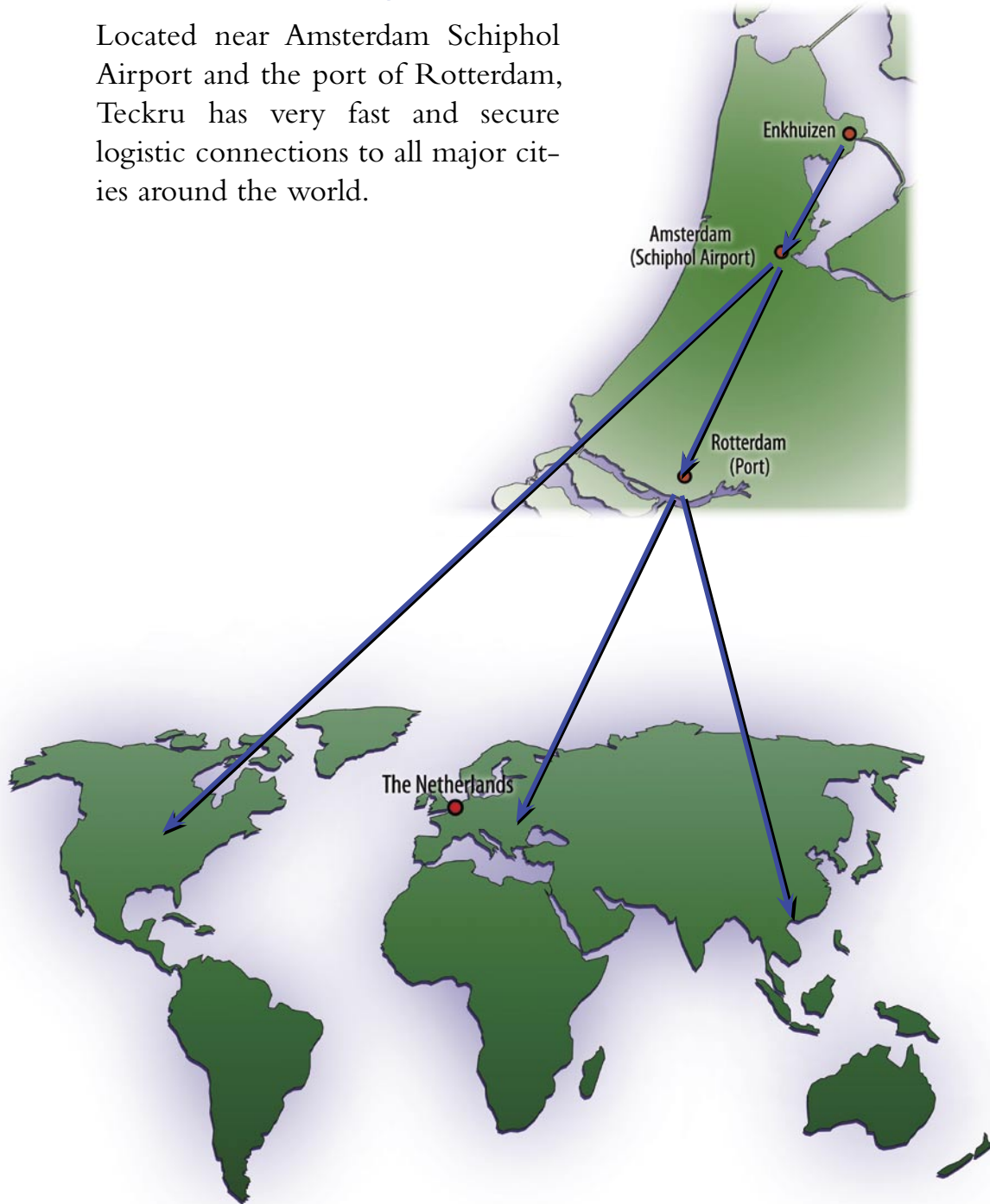


Teckru Cocoa Butter Press T16P-A



# Teckru's Logistics

Located near Amsterdam Schiphol Airport and the port of Rotterdam, Teckru has very fast and secure logistic connections to all major cities around the world.



---

**Teckru B.V. / Teckru Projects B.V.**

address:

De Zwaan 2

1601 MS Enkhuizen

The Netherlands

tel: (+31)228-567855

fax: (+31)228-567813

mob: (+31)618-819318

email: [g.kruiver@teckru.nl](mailto:g.kruiver@teckru.nl)

internet: [www.teckru.nl](http://www.teckru.nl)